



in figures

as of 31 December 2020	JORDAN	LEBANON	SYRIA ⁽¹⁾	WEST BANK	GAZA STRIP	TOTAL/AVE
GENERAL⁽²⁾						
REGISTERED REFUGEES (RR)*	2,307,011	479,537	568,730	871,537	1,476,706	5,703,546
OTHER REGISTERED PERSONS**	156,119	64,287	86,999	211,116	166,845	685,366
TOTAL REGISTERED PERSONS (RP)*	2,463,130	543,284	655,729	1,082,653	1,643,551	6,388,887
REGISTERED POPULATION - YOUTH (%)***	18	13.5	16	17.4	18	17
OFFICIAL CAMPS	10	12	9	19	8	58
EDUCATION - 2020/21 ACADEMIC YEAR						
SCHOOLS (ELEM, PREP + SECONDARY IN LEBANON)	169	65	102	96	278	710
EDUCATIONAL STAFF	4,643	1,655	1,976	2,275	9,679	20,228
FEMALE EDUCATIONAL STAFF (%)	50	56	63	60	63	59
PUPIL ENROLMENT	119,047	37,586	50,609	45,883	286,645	539,770
FEMALE PUPILS (%)	48	52	49	60	48	50
COST PER ELEMENTARY PUPIL (US\$) (2019/20)	811	1,124	485	1,233	820.5	841
VOCATIONAL & TECHNICAL TRAINING CENTRES (VTTCs)	2	1	1	2	2	8
TVET ENROLMENT	2,879	803	1,296	1,073	1,949	8,000
EDUCATIONAL SCIENCES FACULTIES	1	0	0	1	0	2
EDUCATIONAL SCIENCES FACULTY ENROLMENT	1,402	0	0	607	0	2,009
HEALTH						
PRIMARY HEALTH-CARE FACILITIES (PHCF)	25	27	23	43	22	140
HEALTH STAFF	680	285	430	651	946	2,992
FEMALE HEALTH STAFF (%)	61	52	59	63	63	61
PHCFs WITH DENTAL SERVICES (including mobile units)	25	17	21	24	22	109
ANNUAL ANTENATAL CARE PATIENTS ⁽³⁾	12,156	2,890	3,258	9,410	29,919	57,633
ANNUAL PERINATAL CARE PATIENTS ⁽⁴⁾	12,857	3,736	4,721	11,908	37,262	70,484
ANNUAL DIABETES/HYPERTENSION PATIENTS	78,827	29,098	35,109	42,117	98,373	283,584
TOTAL ANNUAL PATIENT VISITS	1,127,805	556,511	672,008	758,746	2,683,834	5,798,904
RELIEF & SOCIAL SERVICES						
SOCIAL SAFETY NET (SSN) BENEFICIARIES ASSISTED***	59,308	61,076	134,995	36,129	98,935	390,443
SSN AS % OF RRs	2.6	12.9	23.7	4.1	6.7	6.8
BENEFICIARIES SERVED THROUGH EA & FOOD ASSISTANCE	146,153	334,812	415,781	257,228	1,043,173	2,197,147
PERCENTAGE OF DISABLED RECEIVING SSN ASSISTANCE	2.1	4	1.2	3.8	1.1	1.8
PERCENTAGE OF WOMEN RECEIVING SSN ASSISTANCE	8	19.7	18.7	7	4.4	8.8
RELIEF AND SOCIAL SERVICES STAFF	104	128	82	169	324	807
FEMALE RELIEF AND SOCIAL SERVICES STAFF (%)	76	72	63	53	50	57
MICROFINANCE (& MICROENTERPRISE IN GAZA & WEST BANK)						
NUMBER OF LOANS 2020	7,199	-	7,834	4,516	1,790	21,339
VALUE OF LOANS 2020 (US\$)	6,241,312	-	1,810,581	6,179,799	2,231,600	16,463,292
NUMBER OF LOANS AWARDED (cumulative) ⁽⁵⁾	140,299	-	141,320	160,557	128,827	571,003
VALUE OF LOANS AWARDED (US\$) (cumulative) ⁽⁵⁾	156,173,987	-	67,107,515	225,302,884	167,347,700	615,932,086
VALUE OF LOANS AWARDED TO WOMEN	2,665,606	-	647,747	2,557,202	766,500	6,637,055
INFRASTRUCTURE AND CAMP IMPROVEMENT						
NO. OF FAMILIES WHO BENEFITED FROM IMPROVED SHELTER CONDITIONS	32	101	N/A	32	424	525
NO. OF SHELTERS REHABILITATED BY EMERGENCY FUNDING	N/A	125	N/A	N/A	396	521
STAFF POSTS⁽⁶⁾						
AREA STAFF	6,094	3,046	3,014	3,849	12,132	28,563 ⁽⁷⁾
INTERNATIONAL STAFF	16	13	13	17	16	193 ⁽⁸⁾

(1) All Syria figures represent a working estimate as the situation in Syria remains volatile.

(2) This figure is based on data drawn from the [UNRWA refugee population and registration database](#), valid as of 1 January 2021.

(3) Based on a four antenatal visit minimum.

(4) Number of women attending postnatal care (PNC) within six weeks of delivery.

(5) Totals since programme inception: 1991/92 in Gaza, 1996 in West Bank, 2003 in Syria and Jordan.

(6) Figures refer to those on staff contracts.

(7) Agency total includes staff in HQ Amman.

(8) The number of Agency-wide international staff in 2020 includes 11 international staff based in UNRWA liaison offices.

* This figure is based on data valid as of December 31, 2020.

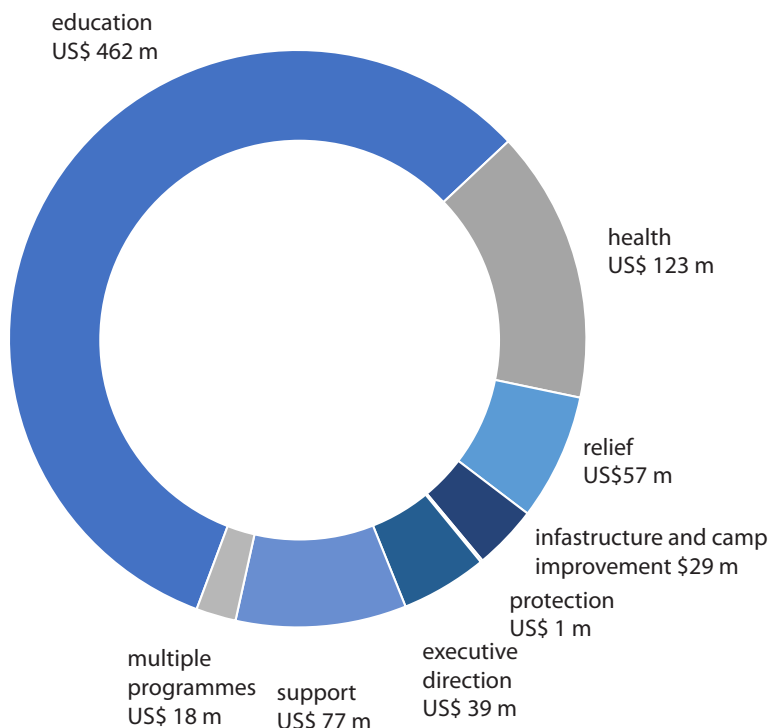
** Other registered persons include non-refugee wives, non-refugee husbands, non-refugee children, Frontier villagers, Jerusalem poor, Gaza poor, and Compromise cases. For more details, click

[here](#).

*** The age range applied for youth is 15-24 years old.

**** Annual average

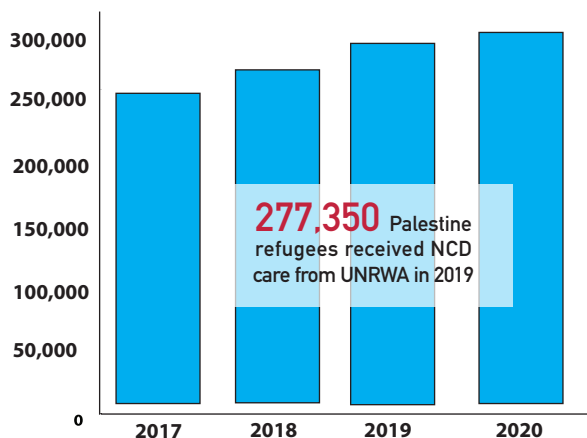
Programme Budget 2021



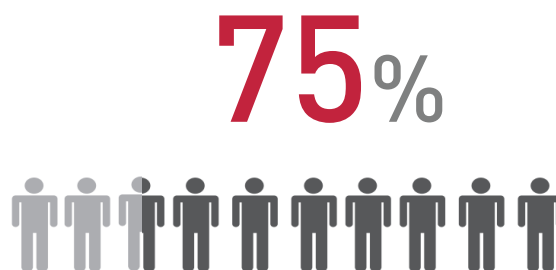
US\$ 806 million

UNRWA is funded almost entirely by voluntary contributions and financial support has been outpaced by the growth in needs, driven by conflict and broader instability. As a result, operations under the UNRWA Programme Budget, which supports the delivery of core essential services, faces chronic challenges due to funding shortfalls. UNRWA encourages all Member States to work collectively to exert all possible efforts to fully fund the Agency's Programme Budget. UNRWA emergency programmes and key projects, also facing large shortfalls, are funded through separate funding portals.

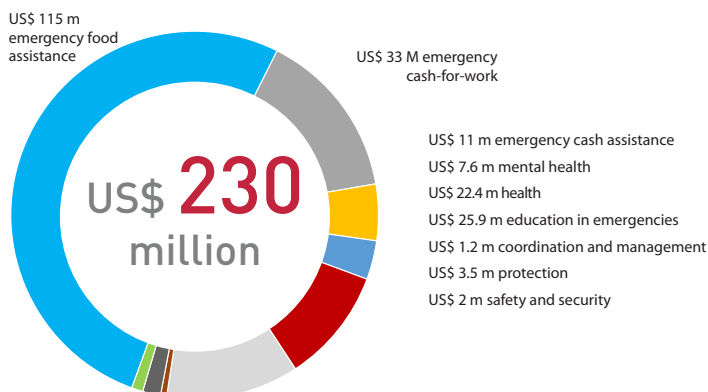
Non-Communicable Disease (NCD) cases under care*



Percentage of UNRWA vocational training students who secured employment one year after graduation



Occupied Palestinian Territory Emergency Appeal 2021



Syria Regional Crisis Emergency Appeal 2021

